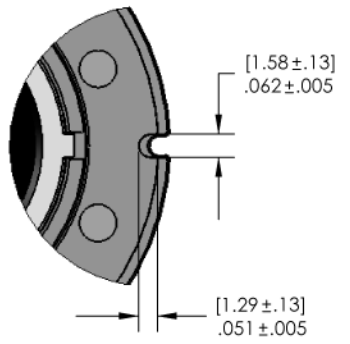
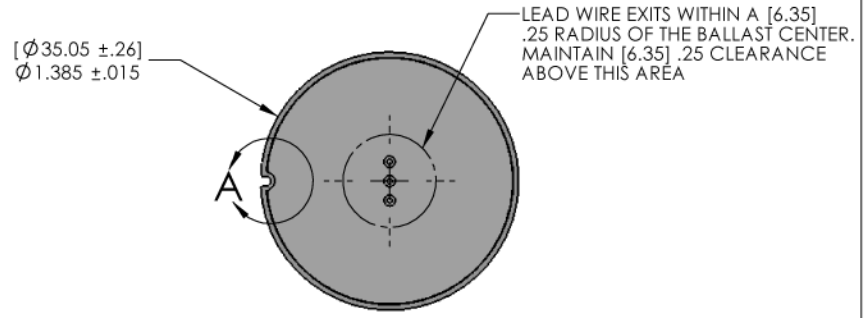
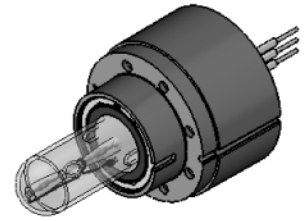
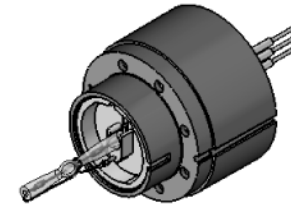
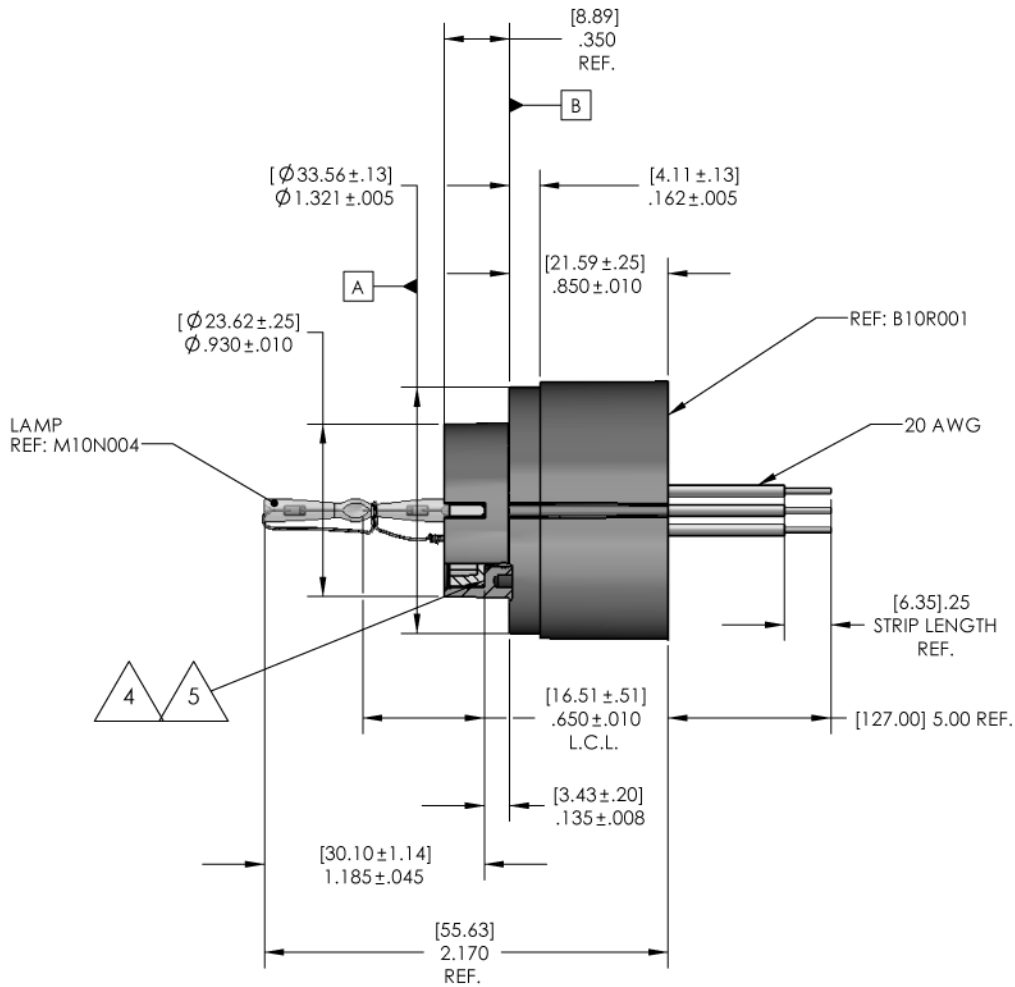


LAMP REF: M10N003

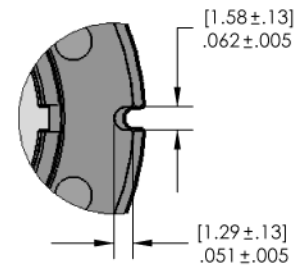
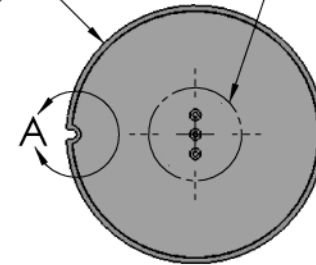


DETAIL A SCALE 3:1 (OPP. END)

| | | |
|---|--|--------------|
| UNLESS OTHERWISE SPECIFIED TOLERANCES XX = ±.02 XXX = ±.005 ANGLES 1/2° DIMENSIONS ARE IN INCHES | USHIO Lighting—Edge Technologies | |
| | SCALE NTS | SHEET 1 OF 4 |



[Ø 35.05 ± .26]
 Ø 1.385 ± .015
 LEAD WIRE EXITS WITHIN A [6.35]
 .25 RADIUS OF BALLAST CENTER.
 MAINTAIN [6.35] .25 CLEARANCE
 ABOVE THIS AREA

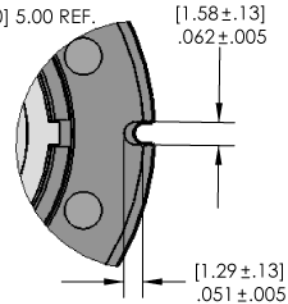
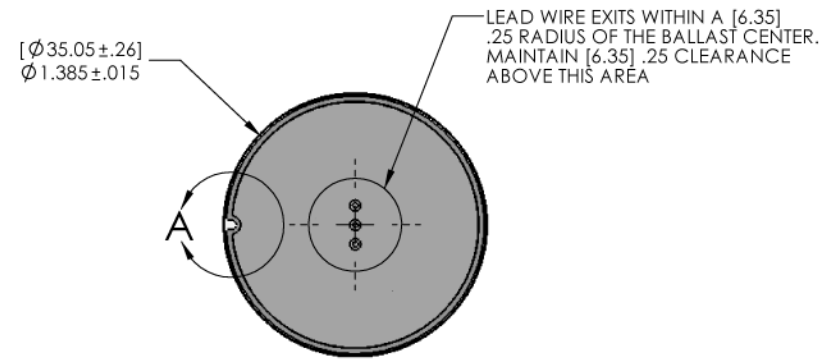
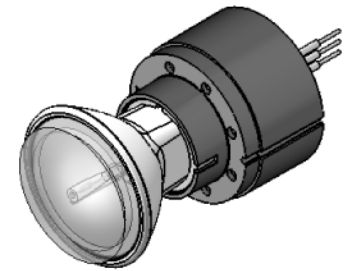
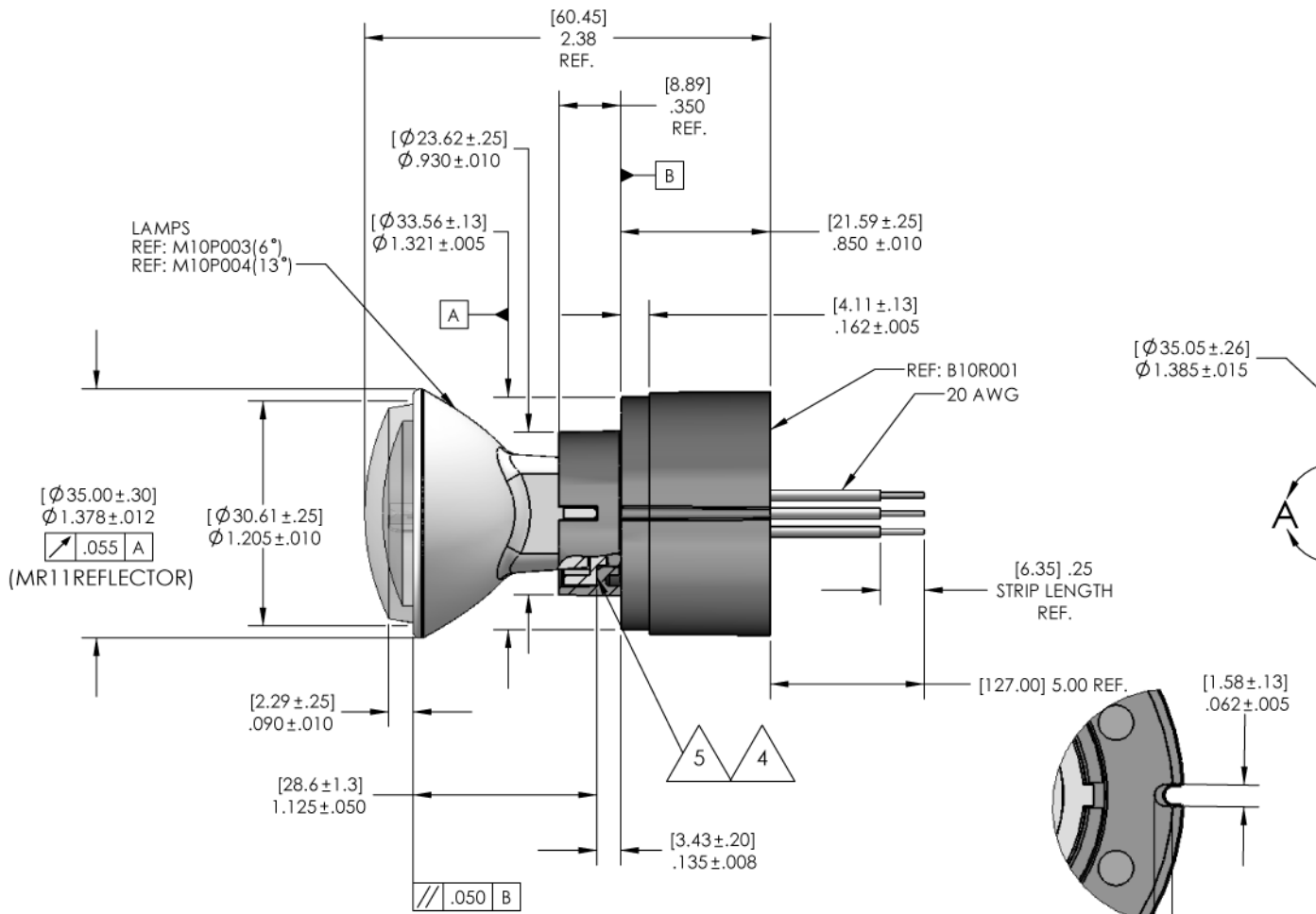


DETAIL A
 SCALE 3:1
 (OPP. END)

UNLESS OTHERWISE SPECIFIED
 TOLERANCES
 XX = ± .02
 XXX = ± .005
 ANGLES 1/2°
 DIMENSIONS ARE IN
 INCHES

USHIO
 Lighting—Edge Technologies

SCALE NTS SHEET 2 OF 4



DETAIL A
 SCALE 3 : 1
 (OPP. END)

UNLESS OTHERWISE SPECIFIED
 TOLERANCES
 XX = ± .02
 XXX = ± .005
 ANGLES 1/2°
 DIMENSIONS ARE IN
 INCHES

USHIO

Lighting—Edge Technologies

SCALE NTS SHEET 3 OF 4

| SPECIFICATION | B10R001-M10P003 | B10R001-M10P004 | B10R001-M10N003 | B10R001-M10N004 |
|---|---|---|----------------------------------|----------------------------------|
| Input voltage | 9-16 VDC | 9-16 VDC | 9-16 VDC | 9-16 VDC |
| Max. safe continuous operating input voltage | 18 VDC | 18 VDC | 18 VDC | 18 VDC |
| Max instantaneous input voltage | 19 VDC | 19 VDC | 19 VDC | 19 VDC |
| Efficiency @ 12 VDC - 25 °C nominal lamp resistive load 600 Ohms | 85% Nom low 85% Nom high | 85% Nom low 85% Nom high | 85% Nom low 85% Nom high | 85% Nom low 85% Nom high |
| Ballast output wattage (regulated across input voltage range) | 9.5W Nom low 14.0W Nom high | 9.5W Nom low 14.0W Nom high | 9.5W Nom low 14.0W Nom high | 9.5W Nom low 14.0W Nom high |
| Ballast input Wattage @ 12 vdc - 25 °C nominal lamp resistive load 600 Ohms | 11.5W Nom low 16.9W Nom high | 11.5W Nom low 16.9W Nom high | 11.5W Nom low 16.9W Nom high | 11.5W Nom low 16.9W Nom high |
| Maximum continous ballast operational case temperature | 90 °C Max | 90 °C Max | 90 °C Max | 90 °C Max |
| Lamp output - Lumens | Face lumens 500 Nom low 1000 Nom high | Face lumens 500 Nom low 1000 Nom high | Spherical lumens 990 Nom high | Spherical Lumens 990 Nom high |
| CCT @ 14W | 6900 Nom | 6900 Nom | 7750 Nom | 7750 Nom |
| Preferential lamp orientation | Arc axis horizontal, slot down | Arc axis horizontal, slot down | Arc axis horizontal, slot down | Arc axis horizontal, slot down |

APPLICATION GUIDANCE NOTES:

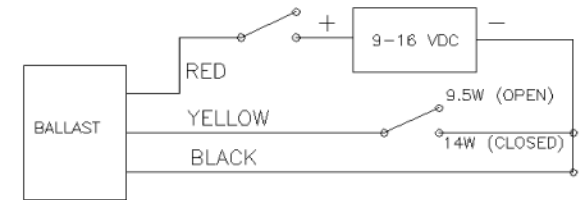
MOUNTING:

1. USE FEATURES AT DATUMS -A- AND -B- IF POSSIBLE FOR OPTIMUM BALLAST MOUNTING. SLOT FEATURE AT DETAIL "A" CAN BE USED FOR POSITION AND TO PROVIDE ANTIROTATION WHERE APPLICABLE.
2. LAMP TO BALLAST TOLERANCES OF LOCATION ARE PROVIDED AS REFERENCE.
3. FOR APPLICATIONS THAT REQUIRE BONDING, BALLAST HOUSING MATERIAL IS PPS.

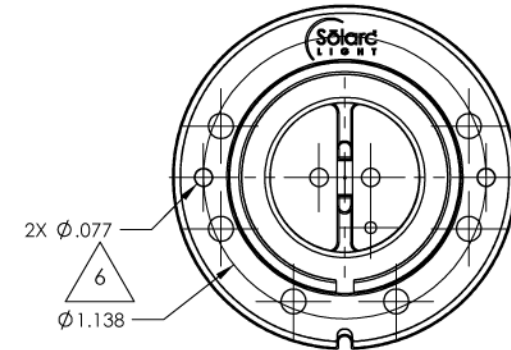
- 4 APPLICATION SHALL ENSURE LAMP BASE SHOULDER IS SEATED TO BALLAST AT LOCATION SHOWN.
- 5 LAMP BASE IS PROVIDED WITH AN INTEGRAL O-RING TO DAMPEN SHOCK LOADS TO LAMP'S ARC TUBE.
- 6 BALLAST HOUSING INCLUDES #2 PLASTITE TYPE FASTENER FEATURES AT LOCATIONS SHOWN TO ALLOW FOR BALLAT MOUNTING. MAXIMUM THREAD PENETRATION DEPTH IS .196" (5MM).

ELECTRICAL:

1. RECOMMENDED ALL APPLICATION BE PROPERLY FUSED.
2. NO REVERSE POLARITY PROTECTION.



WIRE DIAGRAM



UNLESS OTHERWISE SPECIFIED
TOLERANCES
.XX = ±.02
.XXX = ±.005
ANGLES 12°
DIMENSIONS ARE IN
INCHES

USHIO

Lighting—Edge Technologies

SCALE NTS SHEET 4 OF 4